

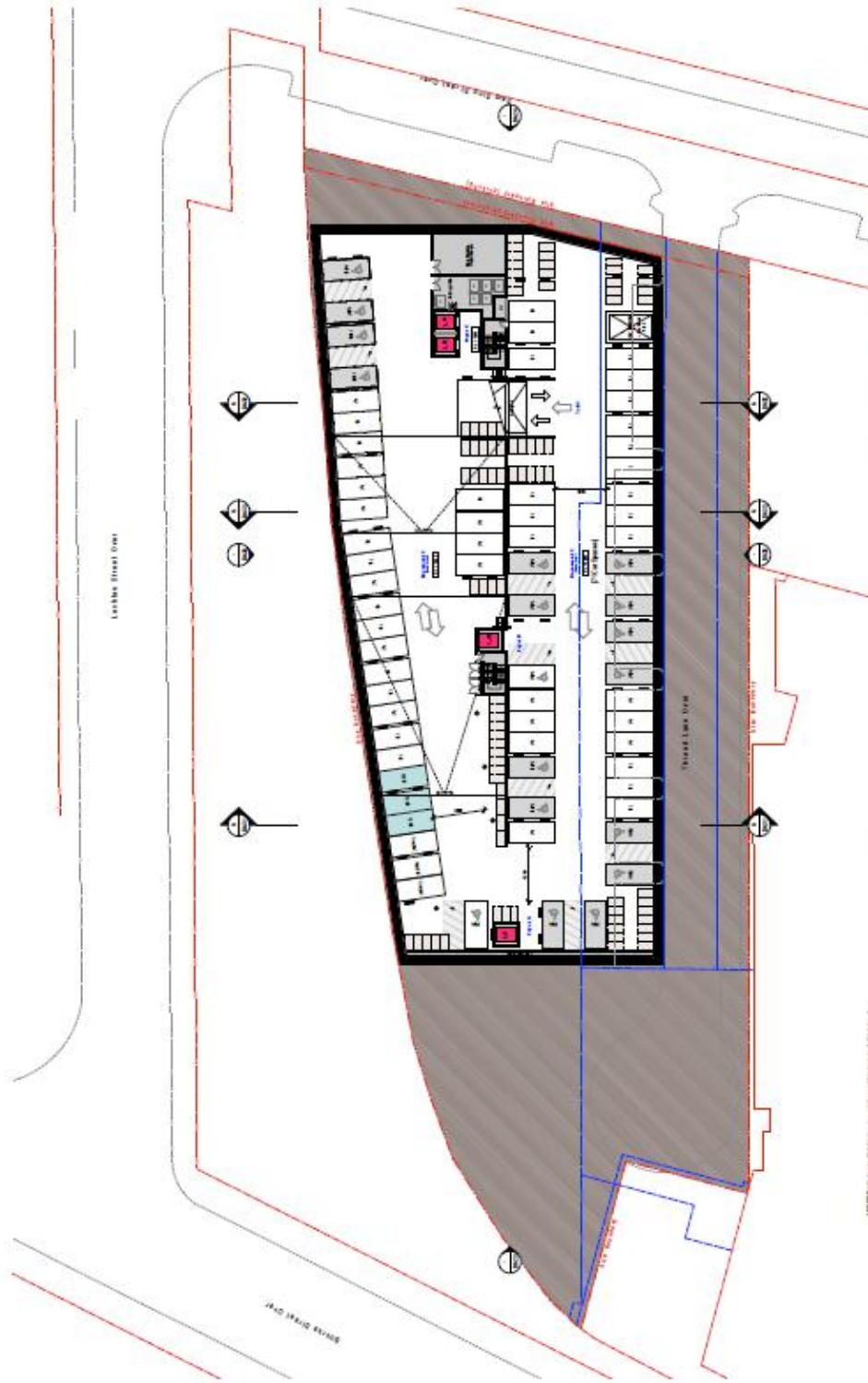
ATTACHMENT A

ATTACHMENT A

ARCHITECTURAL DRAWINGS

**2 SAM SING STREET WATERLOO
(FORMERLY 2B ARCHIBALD AVENUE
WATERLOO)**

ATTACHMENT A



LEGEND

IDENTIFYING CODES FOR ARCHITECTURAL ELEMENTS

- WALLS
- DOORS
- GLASS
- ROOF
- FLOOR
- CEILING
- MECHANICAL
- ELECTRICAL
- PLUMBING
- PAINT
- FINISHES
- LANDSCAPE
- EXTERIOR
- INTERIOR
- MECHANICAL
- ELECTRICAL
- PLUMBING
- PAINT
- FINISHES
- LANDSCAPE
- EXTERIOR
- INTERIOR

TURNER

TURNER CONSULTANTS INC. ARCHITECTS

REGISTERED ARCHITECTS

REGISTERED NUMBER 01234

1000 WEST 1000 AVENUE

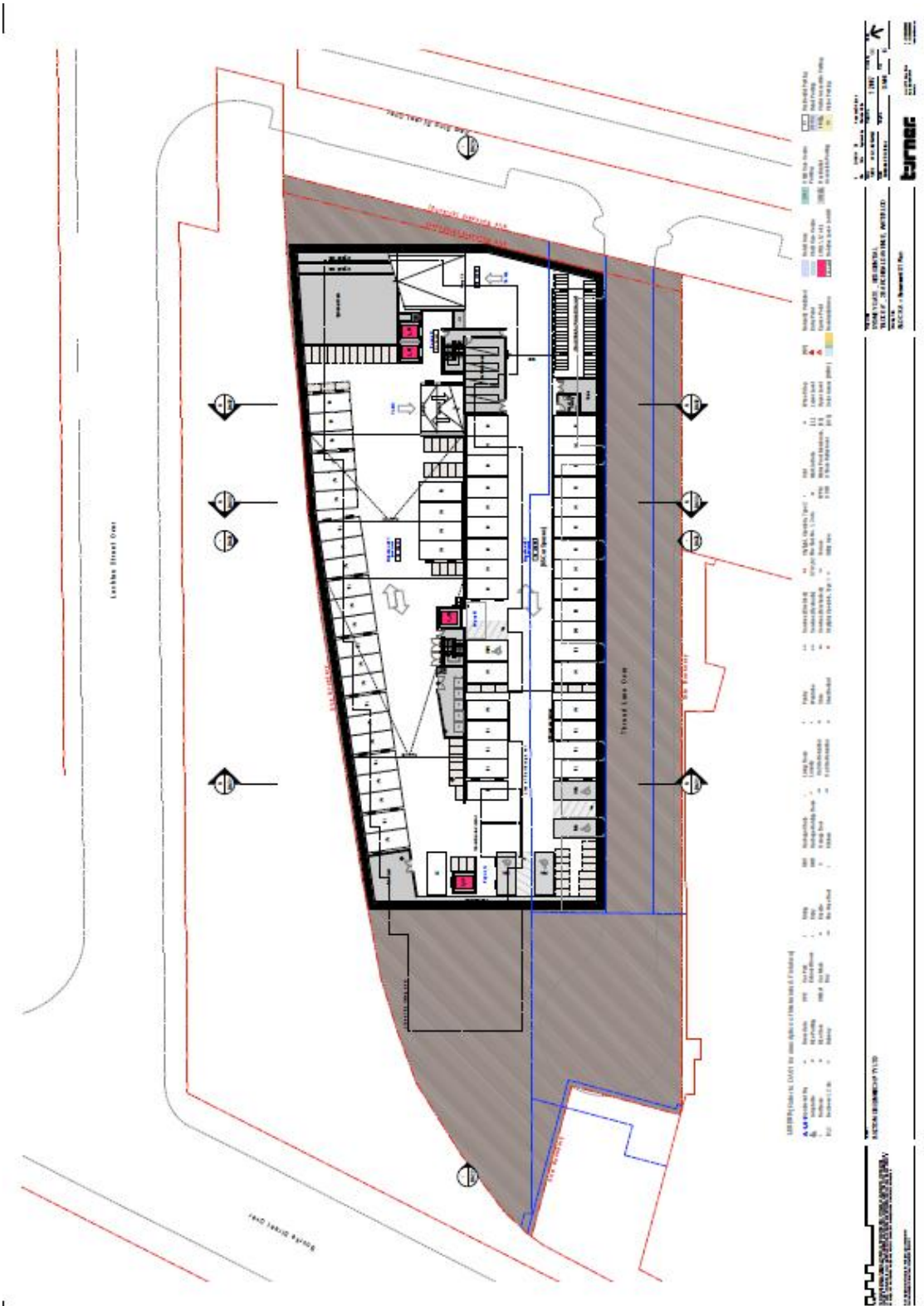
VANCOUVER, BC V6H 3G9

TEL: 604-278-1234

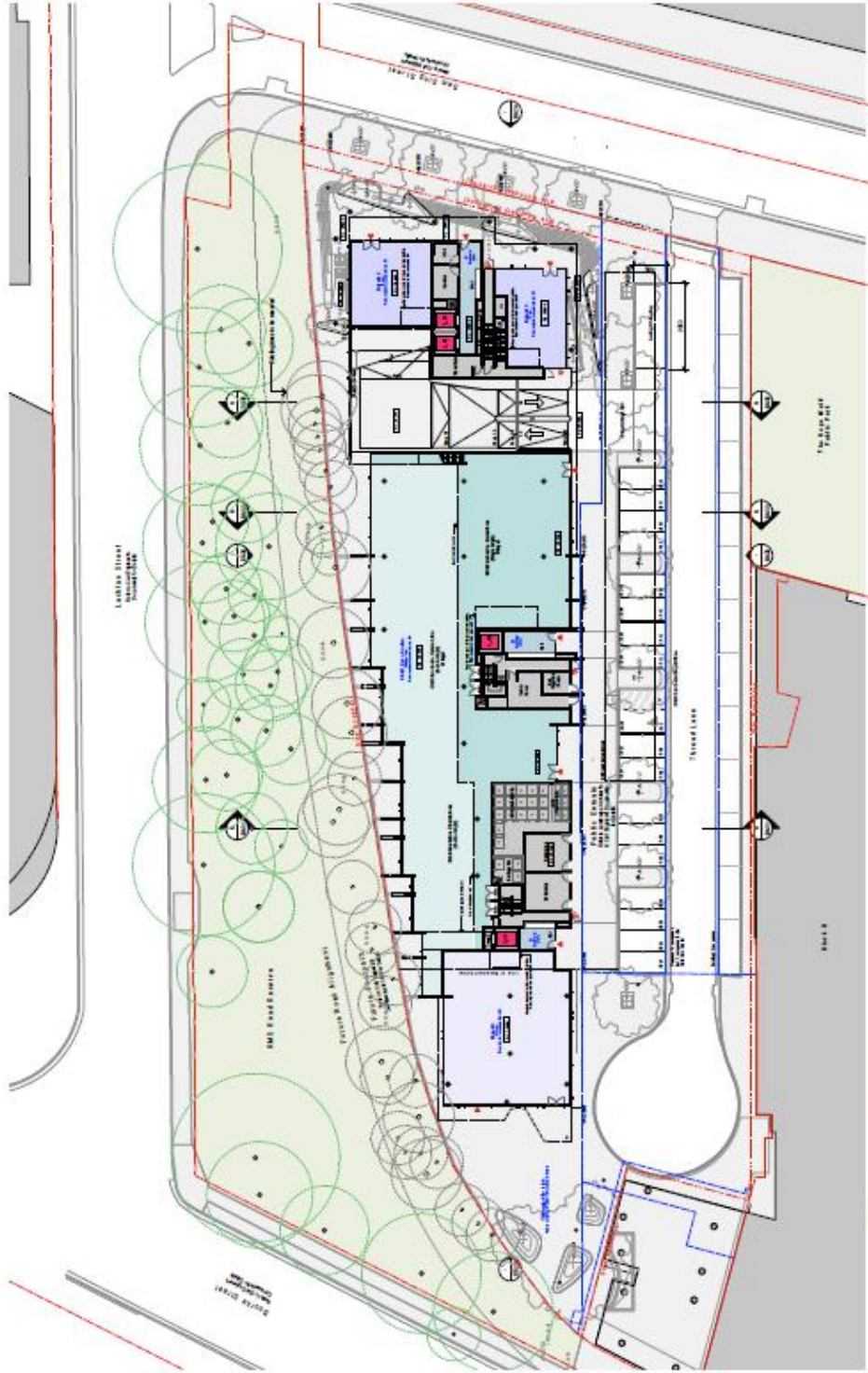
FAX: 604-278-5678

WWW.TURNERCONSULTANTS.COM

ATTACHMENT A



ATTACHMENT A



LEGEND:

- 1" - 1" Caliper
- 2" - 2" Caliper
- 3" - 3" Caliper
- 4" - 4" Caliper
- 5" - 5" Caliper
- 6" - 6" Caliper
- 8" - 8" Caliper
- 10" - 10" Caliper
- 12" - 12" Caliper
- 14" - 14" Caliper
- 16" - 16" Caliper
- 18" - 18" Caliper
- 20" - 20" Caliper
- 24" - 24" Caliper
- 28" - 28" Caliper
- 32" - 32" Caliper
- 36" - 36" Caliper
- 40" - 40" Caliper
- 44" - 44" Caliper
- 48" - 48" Caliper
- 52" - 52" Caliper
- 56" - 56" Caliper
- 60" - 60" Caliper
- 64" - 64" Caliper
- 68" - 68" Caliper
- 72" - 72" Caliper
- 76" - 76" Caliper
- 80" - 80" Caliper
- 84" - 84" Caliper
- 88" - 88" Caliper
- 92" - 92" Caliper
- 96" - 96" Caliper
- 100" - 100" Caliper
- 104" - 104" Caliper
- 108" - 108" Caliper
- 112" - 112" Caliper
- 116" - 116" Caliper
- 120" - 120" Caliper
- 124" - 124" Caliper
- 128" - 128" Caliper
- 132" - 132" Caliper
- 136" - 136" Caliper
- 140" - 140" Caliper
- 144" - 144" Caliper
- 148" - 148" Caliper
- 152" - 152" Caliper
- 156" - 156" Caliper
- 160" - 160" Caliper
- 164" - 164" Caliper
- 168" - 168" Caliper
- 172" - 172" Caliper
- 176" - 176" Caliper
- 180" - 180" Caliper
- 184" - 184" Caliper
- 188" - 188" Caliper
- 192" - 192" Caliper
- 196" - 196" Caliper
- 200" - 200" Caliper

Notes:

1. All trees to be planted in the fall.
2. All trees to be planted in the same lot.
3. All trees to be planted in the same lot.
4. All trees to be planted in the same lot.
5. All trees to be planted in the same lot.
6. All trees to be planted in the same lot.
7. All trees to be planted in the same lot.
8. All trees to be planted in the same lot.
9. All trees to be planted in the same lot.
10. All trees to be planted in the same lot.

Scale: 1" = 10' (Horizontal), 1" = 5' (Vertical)

North Arrow: [Symbol]

DATE: 10/15/2024

PROJECT: 24-0000-0000-0000

REVISIONS:

NO.	DATE	DESCRIPTION
1	10/15/2024	ISSUED FOR PERMITS

DESIGNED BY: [Name]

CHECKED BY: [Name]

SCALE: AS SHOWN

DATE: 10/15/2024

PROJECT: 24-0000-0000-0000

REVISIONS:

NO.	DATE	DESCRIPTION
1	10/15/2024	ISSUED FOR PERMITS

DESIGNED BY: [Name]

CHECKED BY: [Name]

SCALE: AS SHOWN

DATE: 10/15/2024

PROJECT: 24-0000-0000-0000

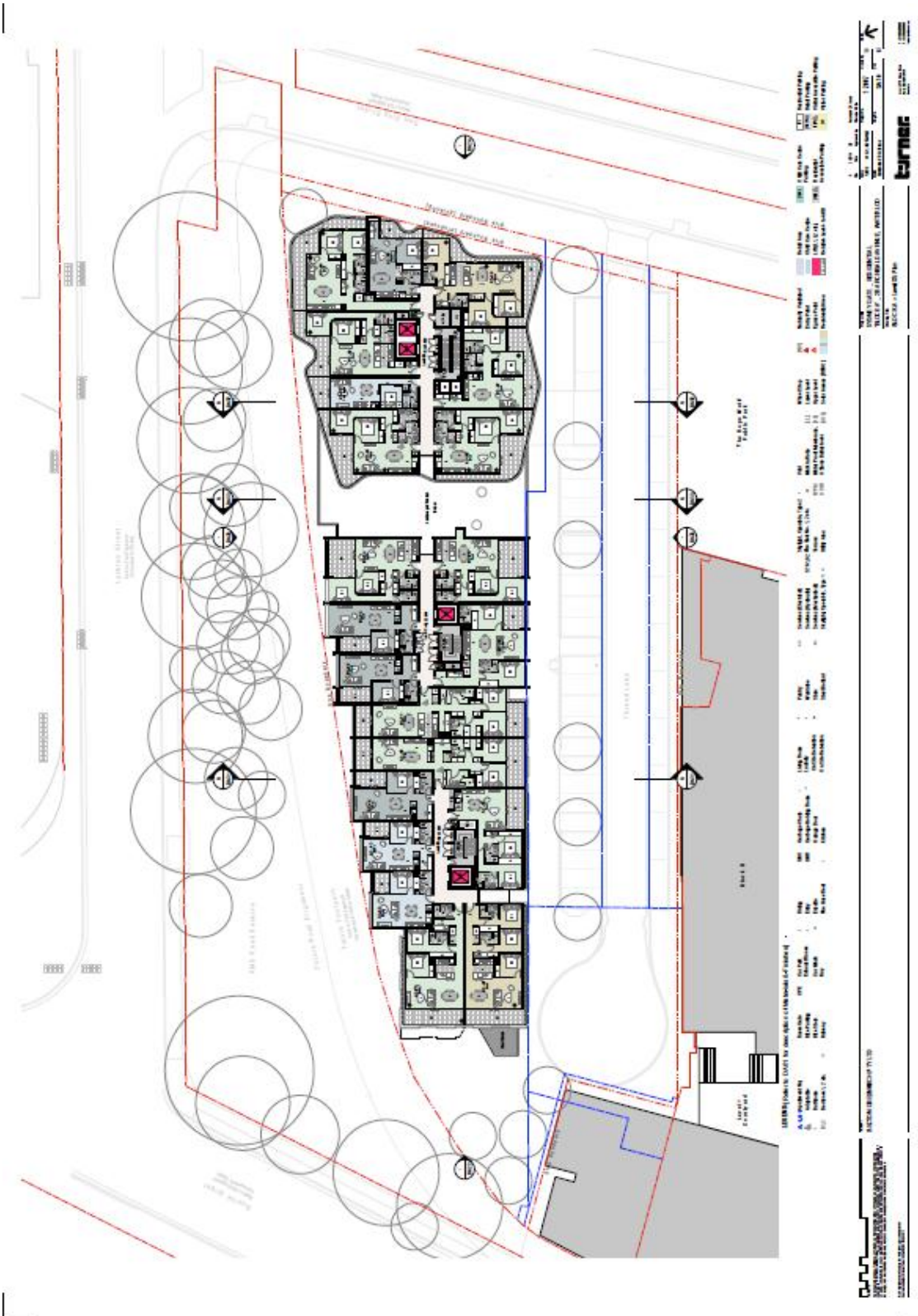
ATTACHMENT A



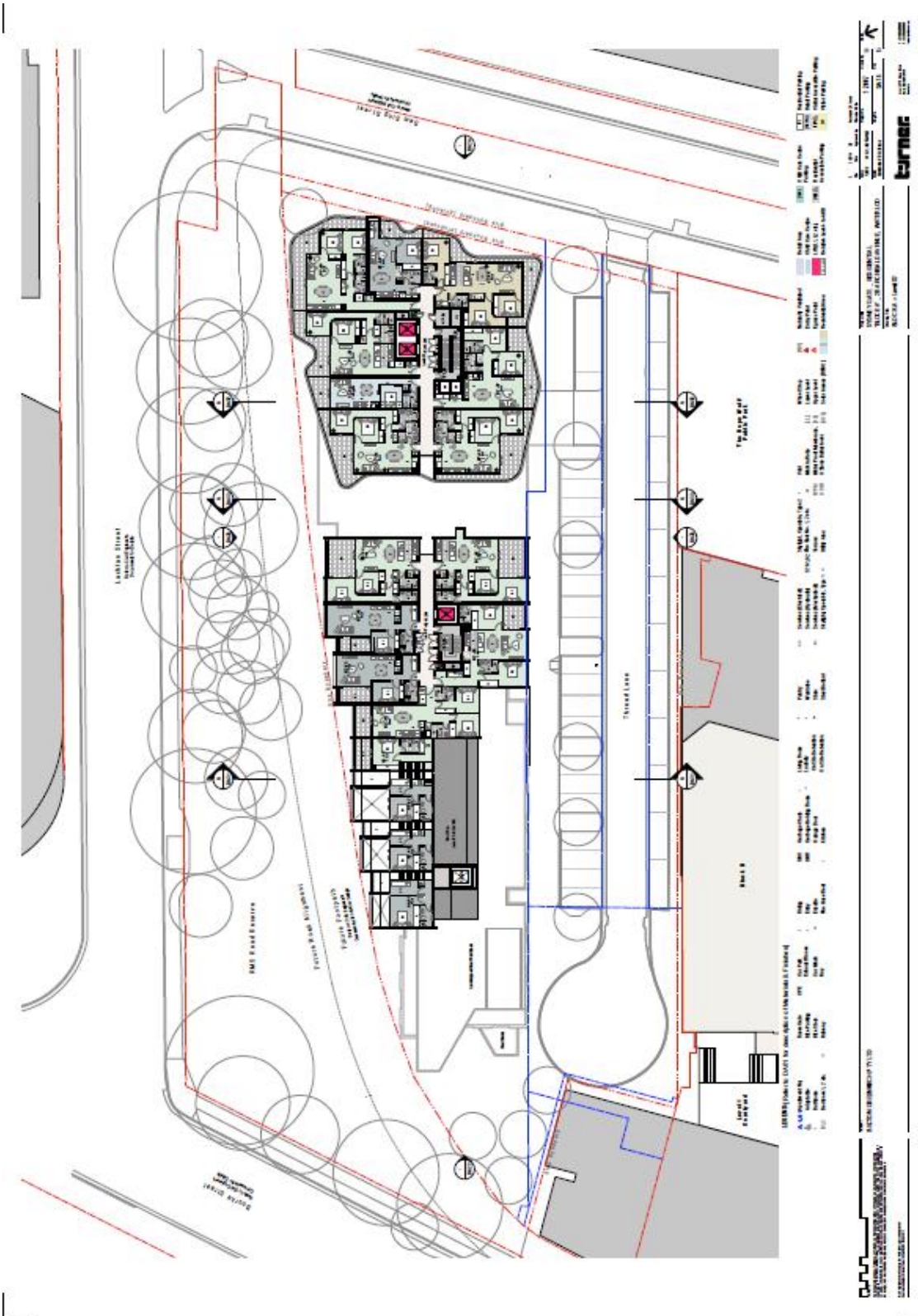
ATTACHMENT A



ATTACHMENT A



ATTACHMENT A



ATTACHMENT A



LEGEND TO USE TO IDENTIFY LOT NUMBER & PROPERTY

Symbol	Lot Number	Property
1	100	100
2	200	200
3	300	300
4	400	400
5	500	500
6	600	600
7	700	700
8	800	800
9	900	900
10	1000	1000
11	1100	1100
12	1200	1200
13	1300	1300
14	1400	1400
15	1500	1500
16	1600	1600
17	1700	1700
18	1800	1800
19	1900	1900
20	2000	2000
21	2100	2100
22	2200	2200
23	2300	2300
24	2400	2400
25	2500	2500
26	2600	2600
27	2700	2700
28	2800	2800
29	2900	2900
30	3000	3000
31	3100	3100
32	3200	3200
33	3300	3300
34	3400	3400
35	3500	3500
36	3600	3600
37	3700	3700
38	3800	3800
39	3900	3900
40	4000	4000
41	4100	4100
42	4200	4200
43	4300	4300
44	4400	4400
45	4500	4500
46	4600	4600
47	4700	4700
48	4800	4800
49	4900	4900
50	5000	5000

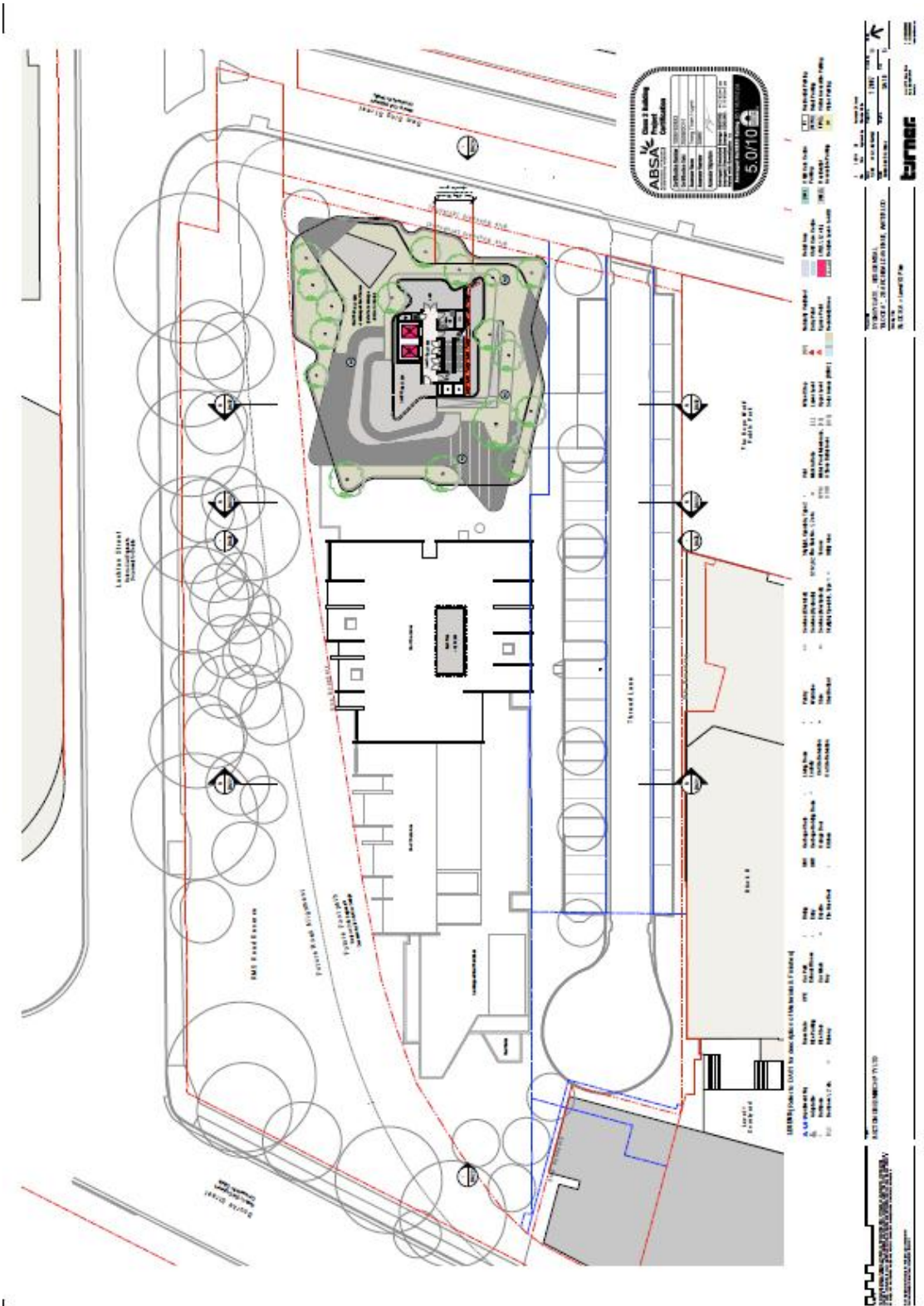
DATE: 11/11/2011
TIME: 10:00 AM
SCALE: 1/8" = 1'-0"

turner

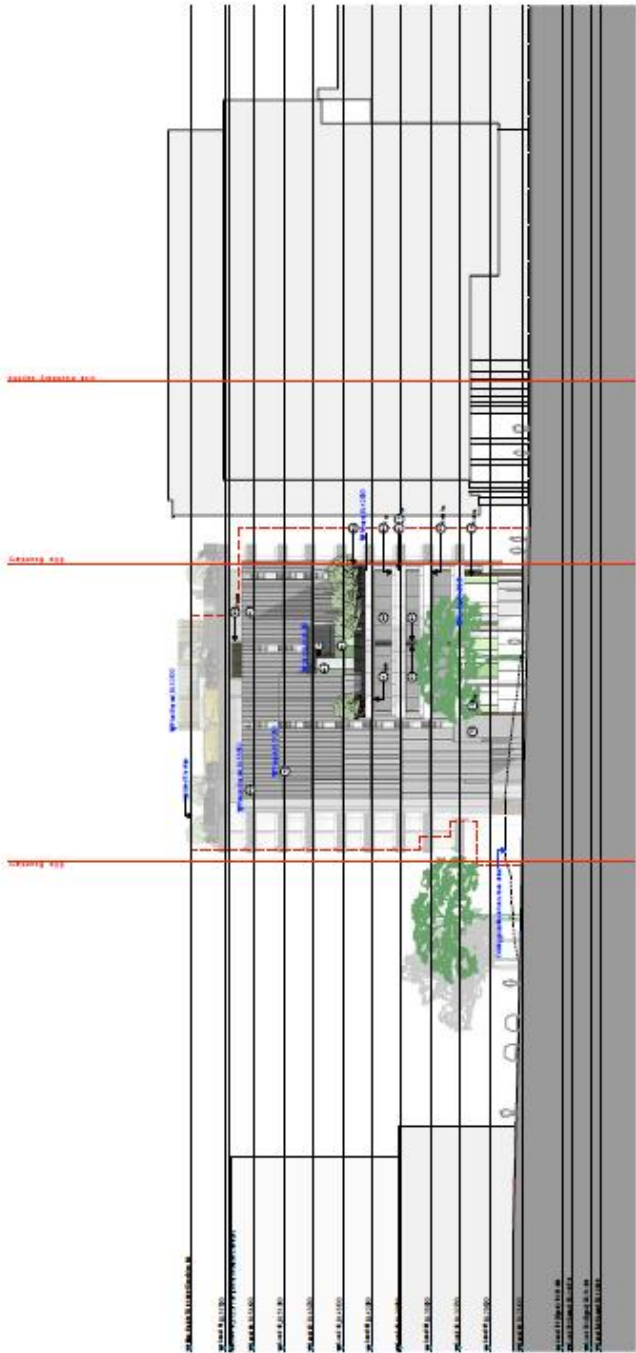
ARCHITECTURE & ENGINEERING

1000 RIVER STREET, SUITE 100
SAN FRANCISCO, CA 94102
TEL: 415.774.3000
WWW.TURNERARCHITECTS.COM

ATTACHMENT A

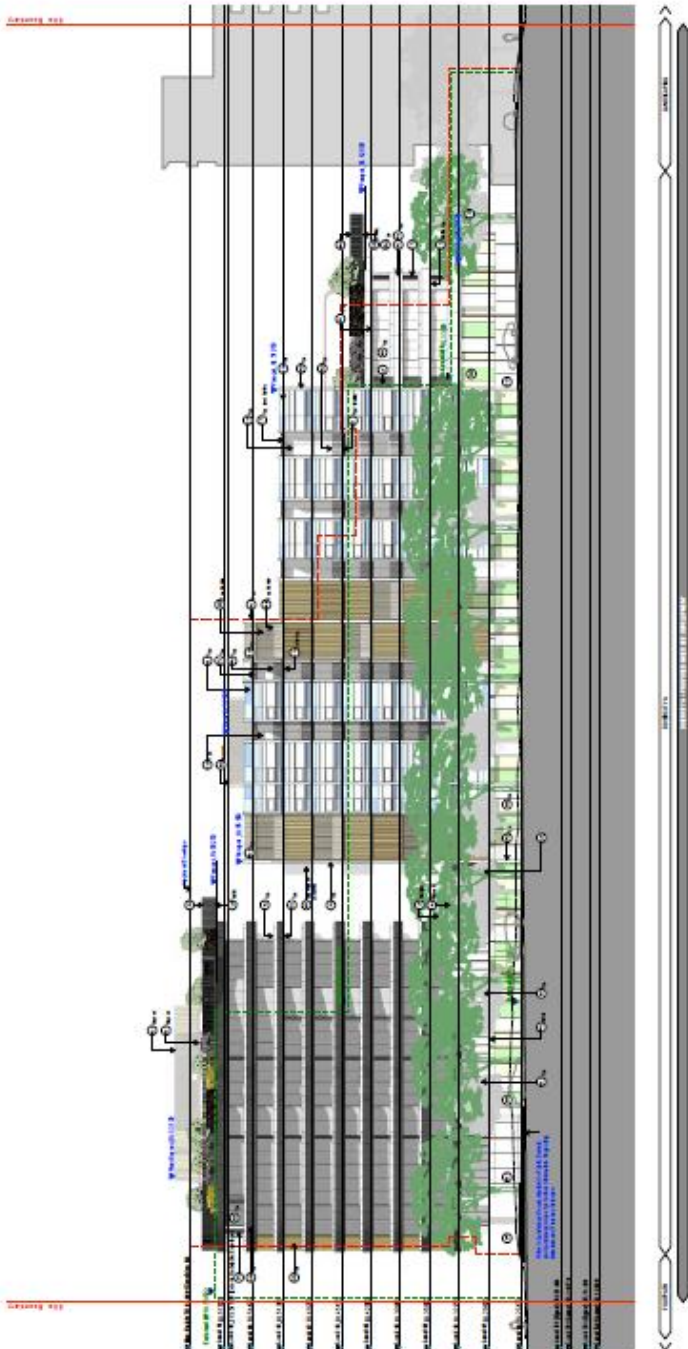


ATTACHMENT A



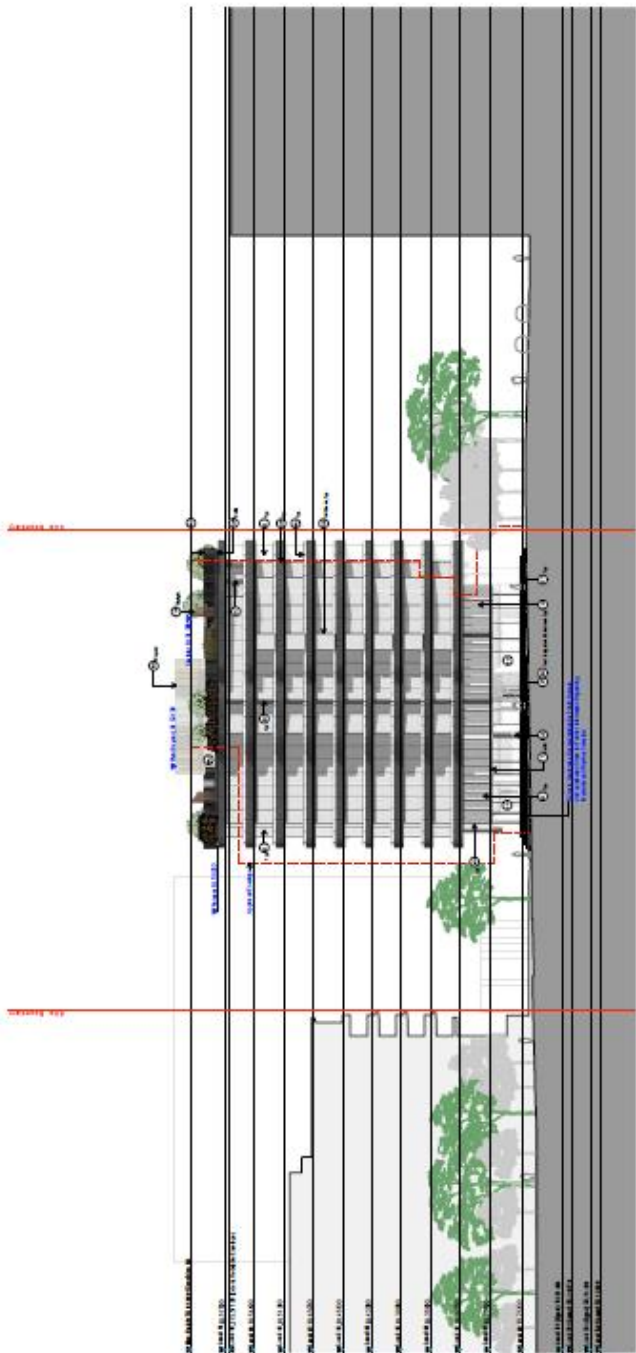
- LEGEND - General Details**
- ① **Window Frame**: Window frame and sill, including the exterior and interior finishes. The window frame is shown in a detailed view.
 - ② **Window Sill**: Window sill, including the exterior and interior finishes. The window sill is shown in a detailed view.
 - ③ **Window Pane**: Window pane, including the exterior and interior finishes. The window pane is shown in a detailed view.
 - ④ **Window Head**: Window head, including the exterior and interior finishes. The window head is shown in a detailed view.
 - ⑤ **Window Jamb**: Window jamb, including the exterior and interior finishes. The window jamb is shown in a detailed view.
 - ⑥ **Window Frame**: Window frame and sill, including the exterior and interior finishes. The window frame is shown in a detailed view.
 - ⑦ **Window Sill**: Window sill, including the exterior and interior finishes. The window sill is shown in a detailed view.
 - ⑧ **Window Pane**: Window pane, including the exterior and interior finishes. The window pane is shown in a detailed view.
 - ⑨ **Window Head**: Window head, including the exterior and interior finishes. The window head is shown in a detailed view.
 - ⑩ **Window Jamb**: Window jamb, including the exterior and interior finishes. The window jamb is shown in a detailed view.
 - ⑪ **Window Frame**: Window frame and sill, including the exterior and interior finishes. The window frame is shown in a detailed view.
 - ⑫ **Window Sill**: Window sill, including the exterior and interior finishes. The window sill is shown in a detailed view.
 - ⑬ **Window Pane**: Window pane, including the exterior and interior finishes. The window pane is shown in a detailed view.
 - ⑭ **Window Head**: Window head, including the exterior and interior finishes. The window head is shown in a detailed view.
 - ⑮ **Window Jamb**: Window jamb, including the exterior and interior finishes. The window jamb is shown in a detailed view.

TURNER
 ARCHITECTS
 1000 17th Street, NW
 Washington, DC 20036
 Phone: (202) 462-4000
 Fax: (202) 462-4001
 www.turnerarchitects.com



- LEGEND - Material Details (Continued)**
- ① **Window Treatments:**
 - ①: Window treatments for upper levels, including horizontal blinds and shades.
 - ②: Window treatments for lower levels, including vertical blinds and shades.
 - ③: Window treatments for ground-level spaces, including curtains and drapes.
 - ② **Exterior Wall Panels:**
 - ①: Exterior wall panels for upper levels, including stone and brick.
 - ②: Exterior wall panels for lower levels, including concrete and metal.
 - ③: Exterior wall panels for ground-level spaces, including wood and glass.
 - ③ **Landscaping:**
 - ①: Landscaping for upper levels, including trees and shrubs.
 - ②: Landscaping for lower levels, including ground cover and mulch.
 - ③: Landscaping for ground-level spaces, including walkways and planters.
 - ④ **Ground Level:**
 - ①: Ground level for upper levels, including walkways and ramps.
 - ②: Ground level for lower levels, including parking and loading zones.
 - ③: Ground level for ground-level spaces, including courtyards and plazas.
 - ⑤ **Roof and Upper Levels:**
 - ①: Roof and upper levels for upper levels, including flat roofs and penthouses.
 - ②: Roof and upper levels for lower levels, including balconies and terraces.
 - ③: Roof and upper levels for ground-level spaces, including atriums and lobbies.
 - ⑥ **Lighting and Signage:**
 - ①: Lighting and signage for upper levels, including recessed lighting and signs.
 - ②: Lighting and signage for lower levels, including pendant lighting and signs.
 - ③: Lighting and signage for ground-level spaces, including street lighting and signs.
 - ⑦ **Structural and Material Details:**
 - ①: Structural and material details for upper levels, including columns and beams.
 - ②: Structural and material details for lower levels, including walls and floors.
 - ③: Structural and material details for ground-level spaces, including stairs and elevators.
 - ⑧ **Material and Finish Selections:**
 - ①: Material and finish selections for upper levels, including stone and brick.
 - ②: Material and finish selections for lower levels, including concrete and metal.
 - ③: Material and finish selections for ground-level spaces, including wood and glass.
 - ⑨ **Accessibility and Safety Features:**
 - ①: Accessibility and safety features for upper levels, including ramps and elevators.
 - ②: Accessibility and safety features for lower levels, including stairs and handrails.
 - ③: Accessibility and safety features for ground-level spaces, including walkways and signage.
 - ⑩ **Utility and Service Elements:**
 - ①: Utility and service elements for upper levels, including HVAC and plumbing.
 - ②: Utility and service elements for lower levels, including electrical and mechanical.
 - ③: Utility and service elements for ground-level spaces, including landscaping and site work.
 - ⑪ **Decorative and Artistic Details:**
 - ①: Decorative and artistic details for upper levels, including murals and sculptures.
 - ②: Decorative and artistic details for lower levels, including wall art and furniture.
 - ③: Decorative and artistic details for ground-level spaces, including landscaping and site work.
 - ⑫ **Environmental and Sustainability Features:**
 - ①: Environmental and sustainability features for upper levels, including green roofs and solar panels.
 - ②: Environmental and sustainability features for lower levels, including energy-efficient lighting and HVAC.
 - ③: Environmental and sustainability features for ground-level spaces, including landscaping and site work.
 - ⑬ **Interior or Semi-enclosed Spaces:**
 - ①: Interior or semi-enclosed spaces for upper levels, including balconies and terraces.
 - ②: Interior or semi-enclosed spaces for lower levels, including courtyards and plazas.
 - ③: Interior or semi-enclosed spaces for ground-level spaces, including atriums and lobbies.
 - ⑭ **Material or Finish Specifications:**
 - ①: Material or finish specifications for upper levels, including stone and brick.
 - ②: Material or finish specifications for lower levels, including concrete and metal.
 - ③: Material or finish specifications for ground-level spaces, including wood and glass.
 - ⑮ **Color and Texture Coordination:**
 - ①: Color and texture coordination for upper levels, including stone and brick.
 - ②: Color and texture coordination for lower levels, including concrete and metal.
 - ③: Color and texture coordination for ground-level spaces, including wood and glass.
 - ⑯ **Hardware and Fixtures:**
 - ①: Hardware and fixtures for upper levels, including door handles and light switches.
 - ②: Hardware and fixtures for lower levels, including wall outlets and light fixtures.
 - ③: Hardware and fixtures for ground-level spaces, including landscaping and site work.
 - ⑰ **Landscaping and Site Integration:**
 - ①: Landscaping and site integration for upper levels, including trees and shrubs.
 - ②: Landscaping and site integration for lower levels, including ground cover and mulch.
 - ③: Landscaping and site integration for ground-level spaces, including walkways and planters.
 - ⑱ **Overall Aesthetic and Design Intent:**
 - ①: Overall aesthetic and design intent for upper levels, including stone and brick.
 - ②: Overall aesthetic and design intent for lower levels, including concrete and metal.
 - ③: Overall aesthetic and design intent for ground-level spaces, including wood and glass.
 - ⑲ **Material or Finish Details:**
 - ①: Material or finish details for upper levels, including stone and brick.
 - ②: Material or finish details for lower levels, including concrete and metal.
 - ③: Material or finish details for ground-level spaces, including wood and glass.
 - ⑳ **Lighting and Signage Details:**
 - ①: Lighting and signage details for upper levels, including recessed lighting and signs.
 - ②: Lighting and signage details for lower levels, including pendant lighting and signs.
 - ③: Lighting and signage details for ground-level spaces, including street lighting and signs.
 - ㉑ **Accessibility and Safety Features:**
 - ①: Accessibility and safety features for upper levels, including ramps and elevators.
 - ②: Accessibility and safety features for lower levels, including stairs and handrails.
 - ③: Accessibility and safety features for ground-level spaces, including walkways and signage.
 - ㉒ **Utility and Service Elements:**
 - ①: Utility and service elements for upper levels, including HVAC and plumbing.
 - ②: Utility and service elements for lower levels, including electrical and mechanical.
 - ③: Utility and service elements for ground-level spaces, including landscaping and site work.
 - ㉓ **Decorative and Artistic Details:**
 - ①: Decorative and artistic details for upper levels, including murals and sculptures.
 - ②: Decorative and artistic details for lower levels, including wall art and furniture.
 - ③: Decorative and artistic details for ground-level spaces, including landscaping and site work.
 - ㉔ **Environmental and Sustainability Features:**
 - ①: Environmental and sustainability features for upper levels, including green roofs and solar panels.
 - ②: Environmental and sustainability features for lower levels, including energy-efficient lighting and HVAC.
 - ③: Environmental and sustainability features for ground-level spaces, including landscaping and site work.
 - ㉕ **Interior or Semi-enclosed Spaces:**
 - ①: Interior or semi-enclosed spaces for upper levels, including balconies and terraces.
 - ②: Interior or semi-enclosed spaces for lower levels, including courtyards and plazas.
 - ③: Interior or semi-enclosed spaces for ground-level spaces, including atriums and lobbies.

TURNER
 ARCHITECTS
 1000 ...
 ...
 ...
 ...



- LEGEND - View of Material Profiles**
- 1. **Material 1:** This material is used for the exterior walls and is a light-colored stone or brick.
 - 2. **Material 2:** This material is used for the exterior walls and is a dark-colored stone or brick.
 - 3. **Material 3:** This material is used for the exterior walls and is a light-colored stone or brick.
 - 4. **Material 4:** This material is used for the exterior walls and is a dark-colored stone or brick.
 - 5. **Material 5:** This material is used for the exterior walls and is a light-colored stone or brick.
 - 6. **Material 6:** This material is used for the exterior walls and is a dark-colored stone or brick.
 - 7. **Material 7:** This material is used for the exterior walls and is a light-colored stone or brick.
 - 8. **Material 8:** This material is used for the exterior walls and is a dark-colored stone or brick.
 - 9. **Material 9:** This material is used for the exterior walls and is a light-colored stone or brick.
 - 10. **Material 10:** This material is used for the exterior walls and is a dark-colored stone or brick.

PROJECT: [Project Name]
 SHEET: [Sheet Number]
 DATE: [Date]
 DRAWN BY: [Name]
 CHECKED BY: [Name]
 SCALE: [Scale]
 TYPED BY: [Name]

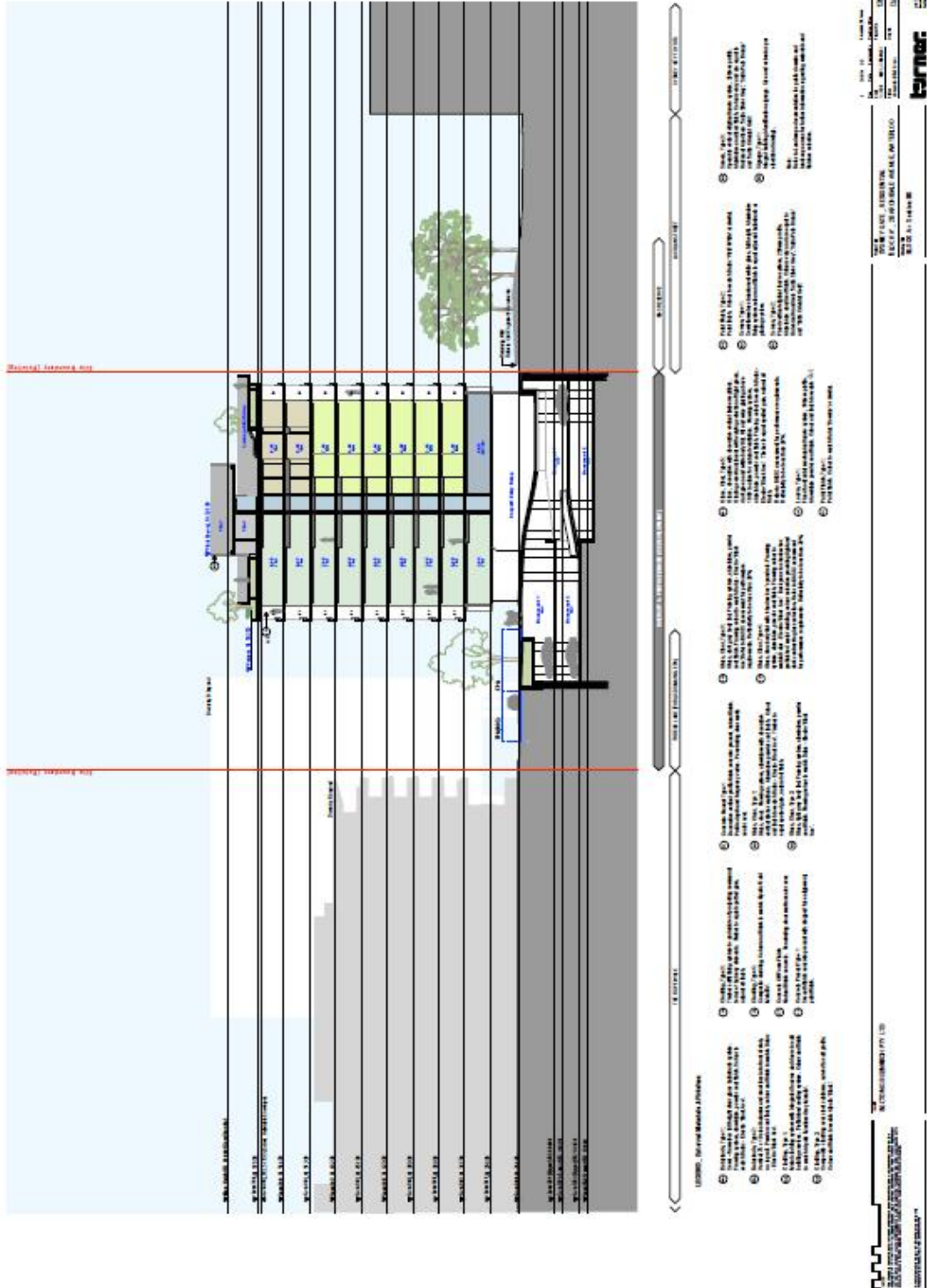
ATTACHMENT A



- LEGEND - Color of Materials / Finishes**
- 1. Dark Grey: Dark grey concrete or stone.
 - 2. Light Grey: Light grey concrete or stone.
 - 3. White: White concrete or stone.
 - 4. Dark Wood: Dark wood paneling.
 - 5. Light Wood: Light wood paneling.
 - 6. Dark Green: Dark green foliage.
 - 7. Light Green: Light green foliage.
 - 8. Yellow: Yellow foliage.
 - 9. Red: Red foliage.
 - 10. Blue: Blue foliage.
 - 11. Purple: Purple foliage.
 - 12. Orange: Orange foliage.
 - 13. Pink: Pink foliage.
 - 14. Brown: Brown foliage.
 - 15. Tan: Tan foliage.
 - 16. Grey: Grey foliage.
 - 17. Black: Black foliage.
 - 18. Silver: Silver foliage.
 - 19. Gold: Gold foliage.
 - 20. Bronze: Bronze foliage.
 - 21. Copper: Copper foliage.
 - 22. Aluminum: Aluminum foliage.
 - 23. Steel: Steel foliage.
 - 24. Iron: Iron foliage.
 - 25. Zinc: Zinc foliage.
 - 26. Nickel: Nickel foliage.
 - 27. Titanium: Titanium foliage.
 - 28. Carbon: Carbon foliage.
 - 29. Silicon: Silicon foliage.
 - 30. Boron: Boron foliage.
 - 31. Nitrogen: Nitrogen foliage.
 - 32. Oxygen: Oxygen foliage.
 - 33. Hydrogen: Hydrogen foliage.
 - 34. Helium: Helium foliage.
 - 35. Neon: Neon foliage.
 - 36. Argon: Argon foliage.
 - 37. Krypton: Krypton foliage.
 - 38. Xenon: Xenon foliage.
 - 39. Radon: Radon foliage.
 - 40. Francium: Francium foliage.
 - 41. Radium: Radium foliage.
 - 42. Actinium: Actinium foliage.
 - 43. Thorium: Thorium foliage.
 - 44. Protactinium: Protactinium foliage.
 - 45. Uranium: Uranium foliage.
 - 46. Neptunium: Neptunium foliage.
 - 47. Plutonium: Plutonium foliage.
 - 48. Americium: Americium foliage.
 - 49. Curium: Curium foliage.
 - 50. Berkelium: Berkelium foliage.
 - 51. Californium: Californium foliage.
 - 52. Einsteinium: Einsteinium foliage.
 - 53. Fermium: Fermium foliage.
 - 54. Mendelevium: Mendelevium foliage.
 - 55. Nobelium: Nobelium foliage.
 - 56. Lawrencium: Lawrencium foliage.
 - 57. Rutherfordium: Rutherfordium foliage.
 - 58. Dubnium: Dubnium foliage.
 - 59. Seaborgium: Seaborgium foliage.
 - 60. Bohrium: Bohrium foliage.
 - 61. Hassium: Hassium foliage.
 - 62. Meitnerium: Meitnerium foliage.
 - 63. Darmstadtium: Darmstadtium foliage.
 - 64. Roentgenium: Roentgenium foliage.
 - 65. Copernicium: Copernicium foliage.
 - 66. Nihonium: Nihonium foliage.
 - 67. Flerovium: Flerovium foliage.
 - 68. Tennessine: Tennessine foliage.
 - 69. Oganesson: Oganesson foliage.

PROJECT: [Project Name]
 CLIENT: [Client Name]
 ARCHITECT: [Architect Name]
 DATE: [Date]
 SCALE: [Scale]
 SHEET: [Sheet Number]
 OF: [Total Sheets]
 DRAWING: [Drawing Title]
 TURNER
 1000 [Address]
 [City, State, Zip]
 [Phone Number]
 [Email Address]

ATTACHMENT A



- LEGEND - 15th Street Station (Platform 1)**
- 1. **TRACKS**: Track centerlines and boundaries.
 - 2. **PLATFORMS**: Platform boundaries and areas.
 - 3. **STATION BUILDING**: Station building footprint.
 - 4. **ACCESSIBLE ENTRANCE**: New accessible entrance location.
 - 5. **NATIONAL LISTENING SPOT**: National listening spot location.
 - 6. **PUBLIC ART**: Public art installation location.
 - 7. **SEATING**: Seating locations.
 - 8. **BIKE RACKS**: Bike rack locations.
 - 9. **WHEELCHAIR RAMP**: Wheelchair ramp location.
 - 10. **STAIRS**: Stair locations.
 - 11. **ELEVATORS**: Elevator locations.
 - 12. **TURNSTILES**: Turnstile locations.
 - 13. **TOILETS**: Toilet locations.
 - 14. **DRINKING FOUNTAINS**: Drinking fountain locations.
 - 15. **SMOKING AREAS**: Smoking area locations.
 - 16. **ARTWORK**: Artwork locations.
 - 17. **PLANTING**: Planting locations.
 - 18. **LANDSCAPING**: Landscaping locations.
 - 19. **UTILITIES**: Utility locations.
 - 20. **STRUCTURAL**: Structural elements.
 - 21. **MECHANICAL**: Mechanical elements.
 - 22. **ELECTRICAL**: Electrical elements.
 - 23. **PLUMBING**: Plumbing elements.
 - 24. **HAZARDOUS WASTE**: Hazardous waste locations.
 - 25. **ASBESTOS**: Asbestos locations.
 - 26. **LEAD**: Lead locations.
 - 27. **PCB**: PCB locations.
 - 28. **PAH**: PAH locations.
 - 29. **PCDD/F**: PCDD/F locations.
 - 30. **PCB/F**: PCB/F locations.
 - 31. **PCB/F**: PCB/F locations.
 - 32. **PCB/F**: PCB/F locations.
 - 33. **PCB/F**: PCB/F locations.
 - 34. **PCB/F**: PCB/F locations.
 - 35. **PCB/F**: PCB/F locations.
 - 36. **PCB/F**: PCB/F locations.
 - 37. **PCB/F**: PCB/F locations.
 - 38. **PCB/F**: PCB/F locations.
 - 39. **PCB/F**: PCB/F locations.
 - 40. **PCB/F**: PCB/F locations.
 - 41. **PCB/F**: PCB/F locations.
 - 42. **PCB/F**: PCB/F locations.
 - 43. **PCB/F**: PCB/F locations.
 - 44. **PCB/F**: PCB/F locations.
 - 45. **PCB/F**: PCB/F locations.
 - 46. **PCB/F**: PCB/F locations.
 - 47. **PCB/F**: PCB/F locations.
 - 48. **PCB/F**: PCB/F locations.
 - 49. **PCB/F**: PCB/F locations.
 - 50. **PCB/F**: PCB/F locations.

